

## Runge-Kutta 2<sup>nd</sup> Order Method for Ordinary Differential Equations

Autar Kaw

After reading this chapter, you should be able to:

1. understand the Runge-Kutta 2nd order method for ordinary differential equations and how to use it to solve problems.

### What is the Runge-Kutta 2nd order method?

The Runge-Kutta 2nd order method is a numerical technique used to solve an ordinary differential equation of the form

$$\frac{dy}{dx} = f(x, y), y(0) = y_0$$

Only first order ordinary differential equations can be solved by using the Runge-Kutta 2nd order method. In other sections, we will discuss how the Euler and Runge-Kutta methods are used to solve higher order ordinary differential equations or coupled (simultaneous) differential equations.

How does one write a first order differential equation in the above form?

### Example 1

Rewrite

$$\frac{dy}{dx} + 2y = 1.3e^{-x}, y(0) = 5$$

in

$$\frac{dy}{dx} = f(x, y), y(0) = y_0 \text{ form.}$$



### Solution

$$\frac{dy}{dx} + 2y = 1.3e^{-x}, y(0) = 5$$

$$\frac{dy}{dx} = 1.3e^{-x} - 2y, y(0) = 5$$

In this case

$$f(x, y) = 1.3e^{-x} - 2y$$

### Example 2

Rewrite

$$e^y \frac{dy}{dx} + x^2 y^2 = 2 \sin(3x), y(0) = 5$$

in

$$\frac{dy}{dx} = f(x, y), y(0) = y_0 \text{ form.}$$

### Solution

$$e^y \frac{dy}{dx} + x^2 y^2 = 2 \sin(3x), y(0) = 5$$

$$\frac{dy}{dx} = \frac{2 \sin(3x) - x^2 y^2}{e^y}, y(0) = 5$$

In this case

$$f(x, y) = \frac{2 \sin(3x) - x^2 y^2}{e^y}$$

### Runge-Kutta 2<sup>nd</sup> order method

Euler's method is given by

Source URL: <http://numericalmethods.eng.usf.edu/>  
Saylor URL: <http://www.saylor.org/courses/me205/>

Attributed to: University of South Florida: Holistic Numerical Methods Institute



Saylor.org

$$y_{i+1} = y_i + f(x_i, y_i)h \quad (1)$$

where

$$x_0 = 0$$

$$y_0 = y(x_0)$$

$$h = x_{i+1} - x_i$$

To understand the Runge-Kutta 2nd order method, we need to derive Euler's method from the Taylor series.

$$\begin{aligned} y_{i+1} &= y_i + \left. \frac{dy}{dx} \right|_{x_i, y_i} (x_{i+1} - x_i) + \frac{1}{2!} \left. \frac{d^2y}{dx^2} \right|_{x_i, y_i} (x_{i+1} - x_i)^2 + \frac{1}{3!} \left. \frac{d^3y}{dx^3} \right|_{x_i, y_i} (x_{i+1} - x_i)^3 + \dots \\ &= y_i + f(x_i, y_i)(x_{i+1} - x_i) + \frac{1}{2!} f'(x_i, y_i)(x_{i+1} - x_i)^2 + \frac{1}{3!} f''(x_i, y_i)(x_{i+1} - x_i)^3 + \dots \quad (2) \end{aligned}$$

As you can see the first two terms of the Taylor series

$$y_{i+1} = y_i + f(x_i, y_i)h$$

are Euler's method and hence can be considered to be the Runge-Kutta 1st order method.

The true error in the approximation is given by

$$E_i = \frac{f'(x_i, y_i)}{2!} h^2 + \frac{f''(x_i, y_i)}{3!} h^3 + \dots \quad (3)$$

So what would a 2nd order method formula look like. It would include one more term of the Taylor series as follows.

$$y_{i+1} = y_i + f(x_i, y_i)h + \frac{1}{2!} f'(x_i, y_i)h^2 \quad (4)$$

Let us take a generic example of a first order ordinary differential equation



$$\frac{dy}{dx} = e^{-2x} - 3y, y(0) = 5$$

$$f(x, y) = e^{-2x} - 3y$$

Now since  $y$  is a function of  $x$ ,

$$\begin{aligned} f'(x, y) &= \frac{\partial f(x, y)}{\partial x} + \frac{\partial f(x, y)}{\partial y} \frac{dy}{dx} \\ (5) \quad &= \frac{\partial}{\partial x} (e^{-2x} - 3y) + \frac{\partial}{\partial y} [(e^{-2x} - 3y)](e^{-2x} - 3y) \\ &= -2e^{-2x} + (-3)(e^{-2x} - 3y) \\ &= -5e^{-2x} + 9y \end{aligned}$$

The 2nd order formula for the above example would be

$$\begin{aligned} y_{i+1} &= y_i + f(x_i, y_i)h + \frac{1}{2!} f'(x_i, y_i)h^2 \\ &= y_i + (e^{-2x_i} - 3y_i)h + \frac{1}{2!} (-5e^{-2x_i} + 9y_i)h^2 \end{aligned}$$

However, we already see the difficulty of having to find  $f'(x, y)$  in the above method. What Runge and Kutta did was write the 2nd order method as

$$y_{i+1} = y_i + (a_1 k_1 + a_2 k_2)h \tag{6}$$

where

$$\begin{aligned} k_1 &= f(x_i, y_i) \\ k_2 &= f(x_i + p_1 h, y_i + q_{11} k_1 h) \end{aligned} \tag{7}$$

This form allows one to take advantage of the 2nd order method without having to calculate  $f'(x, y)$ .



So how do we find the unknowns  $a_1$ ,  $a_2$ ,  $p_1$  and  $q_{11}$ . Without proof (see Appendix for proof), equating Equation (4) and (6), gives three equations.

$$a_1 + a_2 = 1$$

$$a_2 p_1 = \frac{1}{2}$$

$$a_2 q_{11} = \frac{1}{2}$$

Since we have 3 equations and 4 unknowns, we can assume the value of one of the unknowns. The other three will then be determined from the three equations. Generally the value of  $a_2$  is chosen to evaluate the other three constants. The three values generally used for  $a_2$  are  $\frac{1}{2}$ , 1 and  $\frac{2}{3}$ , and are known as Heun's Method, the midpoint method and Ralston's method, respectively.

### Heun's Method

Here  $a_2 = \frac{1}{2}$  is chosen, giving

$$a_1 = \frac{1}{2}$$

$$p_1 = 1$$

$$q_{11} = 1$$

resulting in

$$y_{i+1} = y_i + \left( \frac{1}{2} k_1 + \frac{1}{2} k_2 \right) h$$

(8)

where

$$k_1 = f(x_i, y_i)$$

(9a)

Source URL: <http://numericalmethods.eng.usf.edu/>  
Saylor URL: <http://www.saylor.org/courses/me205/>

Attributed to: University of South Florida: Holistic Numerical Methods Institute

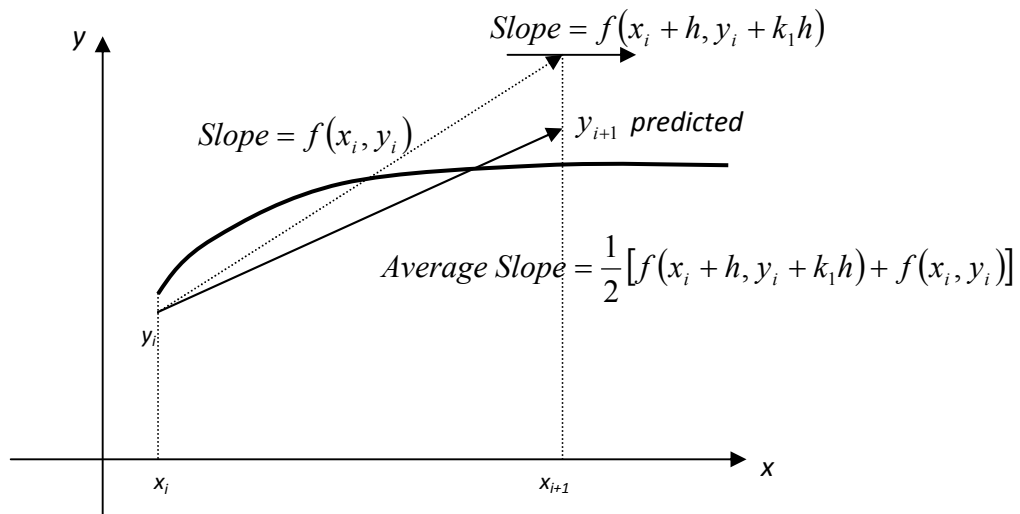


Saylor.org

$$k_2 = f(x_i + h, y_i + k_1 h)$$

(9b)

This method is graphically explained in Figure 1.



**Figure 1** Runge-Kutta 2nd order method (Heun's method).

### Midpoint Method

Here  $a_2 = 1$  is chosen, giving

$$a_1 = 0$$

$$p_1 = \frac{1}{2}$$

$$q_{11} = \frac{1}{2}$$

resulting in

$$y_{i+1} = y_i + k_2 h$$

(10)

Source URL: <http://numericalmethods.eng.usf.edu/>  
Saylor URL: <http://www.saylor.org/courses/me205/>

Attributed to: University of South Florida: Holistic Numerical Methods Institute



Saylor.org

where

$$k_1 = f(x_i, y_i)$$

(11a)

$$k_2 = f\left(x_i + \frac{1}{2}h, y_i + \frac{1}{2}k_1h\right)$$

(11b)

### Ralston's Method

Here  $a_2 = \frac{2}{3}$  is chosen, giving

$$a_1 = \frac{1}{3}$$

$$p_1 = \frac{3}{4}$$

$$q_{11} = \frac{3}{4}$$

resulting in

$$y_{i+1} = y_i + \left(\frac{1}{3}k_1 + \frac{2}{3}k_2\right)h$$

(12)

where

$$k_1 = f(x_i, y_i)$$

(13a)

$$k_2 = f\left(x_i + \frac{3}{4}h, y_i + \frac{3}{4}k_1h\right)$$

(13b)

### Example 3

Source URL: <http://numericalmethods.eng.usf.edu/>  
Saylor URL: <http://www.saylor.org/courses/me205/>

Attributed to: University of South Florida: Holistic Numerical Methods Institute



Saylor.org

A ball at 1200 K is allowed to cool down in air at an ambient temperature of 300 K. Assuming heat is lost only due to radiation, the differential equation for the temperature of the ball is given by

$$\frac{d\theta}{dt} = -2.2067 \times 10^{-12} (\theta^4 - 81 \times 10^8)$$

where  $\theta$  is in K and  $t$  in seconds. Find the temperature at  $t = 480$  seconds using Runge-Kutta 2nd order method. Assume a step size of  $h = 240$  seconds.

### Solution

$$\frac{d\theta}{dt} = -2.2067 \times 10^{-12} (\theta^4 - 81 \times 10^8)$$

$$f(t, \theta) = -2.2067 \times 10^{-12} (\theta^4 - 81 \times 10^8)$$

Per Heun's method given by Equations (8) and (9)

$$\theta_{i+1} = \theta_i + \left( \frac{1}{2} k_1 + \frac{1}{2} k_2 \right) h$$

$$k_1 = f(t_i, \theta_i)$$

$$k_2 = f(t_i + h, \theta_i + k_1 h)$$

$$i = 0, t_0 = 0, \theta_0 = \theta(0) = 1200$$

$$k_1 = f(t_0, \theta_0)$$

$$= f(0, 1200)$$

$$= -2.2067 \times 10^{-12} (1200^4 - 81 \times 10^8)$$

$$= -4.5579$$

$$k_2 = f(t_0 + h, \theta_0 + k_1 h)$$

$$= f(0 + 240, 1200 + (-4.5579)240)$$



$$\begin{aligned}
&= f(240,106.09) \\
&= -2.2067 \times 10^{-12} (106.09^4 - 81 \times 10^8) \\
&= 0.017595 \\
\theta_1 &= \theta_0 + \left( \frac{1}{2} k_1 + \frac{1}{2} k_2 \right) h \\
&= 1200 + \left( \frac{1}{2} (-4.5579) + \frac{1}{2} (0.017595) \right) 240 \\
&= 1200 + (-2.2702) 240 \\
&= 655.16 \text{ K} \\
i &= 1, t_1 = t_0 + h = 0 + 240 = 240, \theta_1 = 655.16 \text{ K} \\
k_1 &= f(t_1, \theta_1) \\
&= f(240, 655.16) \\
&= -2.2067 \times 10^{-12} (655.16^4 - 81 \times 10^8) \\
&= -0.38869 \\
k_2 &= f(t_1 + h, \theta_1 + k_1 h) \\
&= f(240 + 240, 655.16 + (-0.38869) 240) \\
&= f(480, 561.87) \\
&= -2.2067 \times 10^{-12} (561.87^4 - 81 \times 10^8) \\
&= -0.20206 \\
\theta_2 &= \theta_1 + \left( \frac{1}{2} k_1 + \frac{1}{2} k_2 \right) h \\
&= 655.16 + \left( \frac{1}{2} (-0.38869) + \frac{1}{2} (-0.20206) \right) 240
\end{aligned}$$

Source URL: <http://numericalmethods.eng.usf.edu/>  
Saylor URL: <http://www.saylor.org/courses/me205/>

Attributed to: University of South Florida: Holistic Numerical Methods Institute



Saylor.org

Page 9 of 17

$$\begin{aligned}
 &= 655.16 + (-0.29538)240 \\
 &= 584.27 \text{ K} \\
 \theta_2 = \theta(480) &= 584.27 \text{ K}
 \end{aligned}$$

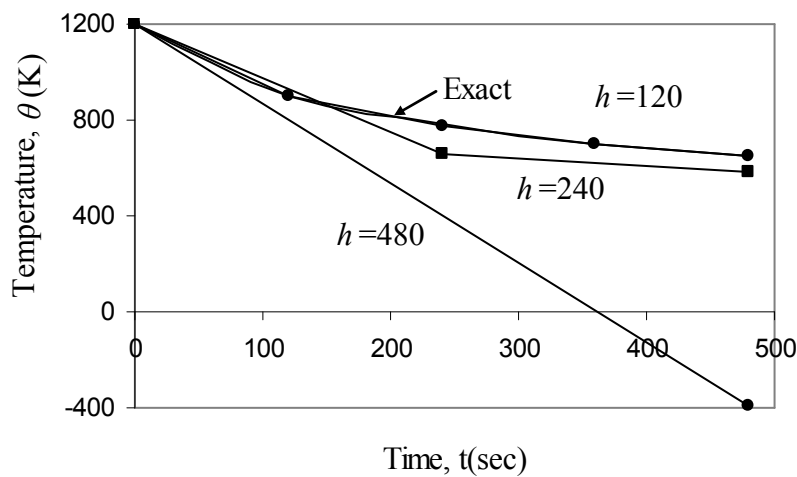
The results from Heun's method are compared with exact results in Figure 2.

The exact solution of the ordinary differential equation is given by the solution of a nonlinear equation as

$$0.92593 \ln \frac{\theta - 300}{\theta + 300} - 1.8519 \tan^{-1}(0.0033333\theta) = -0.22067 \times 10^{-3} t - 2.9282$$

The solution to this nonlinear equation at  $t = 480$  s is

$$\theta(480) = 647.57 \text{ K}$$



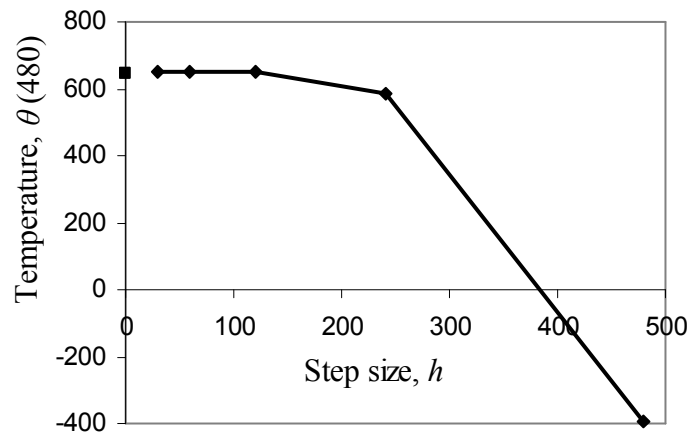
**Figure 2** Heun's method results for different step sizes.

Using a smaller step size would increase the accuracy of the result as given in Table 1 and Figure 3 below.



**Table 1** Effect of step size for Heun's method

Step size, $h$	$\theta(480)$	$E_t$	$ \epsilon_t \%$
480	-393.87	1041.4	160.82
240	584.27	63.304	9.7756
120	651.35	-3.7762	0.58313
60	649.91	-2.3406	0.36145
30	648.21	-0.63219	0.097625



**Figure 3** Effect of step size in Heun's method.

In Table 2, Euler's method and the Runge-Kutta 2nd order method results are shown as a function of step size,

**Table 2** Comparison of Euler and the Runge-Kutta methods

Source URL: <http://numericalmethods.eng.usf.edu/>  
Saylor URL: <http://www.saylor.org/courses/me205/>

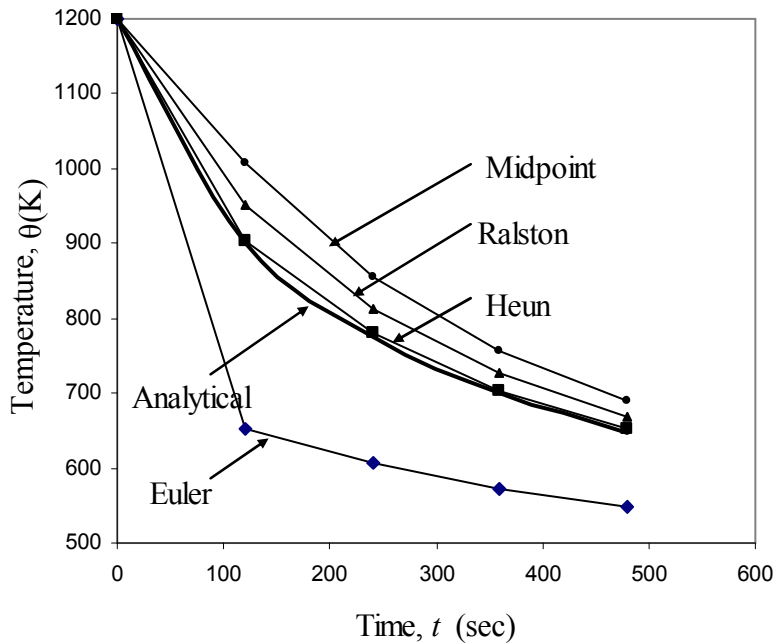
Attributed to: University of South Florida: Holistic Numerical Methods Institute



Saylor.org

Step size, $h$	$\theta(480)$			
	Euler	Heun	Midpoint	Ralston
480	-987.84	-393.87	1208.4	449.78
240	110.32	584.27	976.87	690.01
120	546.77	651.35	690.20	667.71
60	614.97	649.91	654.85	652.25
30	632.77	648.21	649.02	648.61

while in Figure 4, the comparison is shown over the range of time.



**Figure 4** Comparison of Euler and Runge Kutta methods with exact results over time.

Source URL: <http://numericalmethods.eng.usf.edu/>  
 Saylor URL: <http://www.saylor.org/courses/me205/>

Attributed to: University of South Florida: Holistic Numerical Methods Institute



Saylor.org

**How do these three methods compare with results obtained if we found  $f'(x, y)$  directly?**

Of course, we know that since we are including the first three terms in the series, if the solution is a polynomial of order two or less (that is, quadratic, linear or constant), any of the three methods are exact. But for any other case the results will be different.

Let us take the example of

$$\frac{dy}{dx} = e^{-2x} - 3y, y(0) = 5.$$

If we directly find  $f'(x, y)$ , the first three terms of the Taylor series gives

$$y_{i+1} = y_i + f(x_i, y_i)h + \frac{1}{2!} f'(x_i, y_i)h^2$$

where

$$f(x, y) = e^{-2x} - 3y$$

$$f'(x, y) = -5e^{-2x} + 9y$$

For a step size of  $h = 0.2$ , using Heun's method, we find

$$y(0.6) = 1.0930$$

The exact solution

$$y(x) = e^{-2x} + 4e^{-3x}$$

gives

$$\begin{aligned} y(0.6) &= e^{-2(0.6)} + 4e^{-3(0.6)} \\ &= 0.96239 \end{aligned}$$

Then the absolute relative true error is

$$\begin{aligned} |\epsilon_t| &= \left| \frac{0.96239 - 1.0930}{0.96239} \right| \times 100 \\ &= 13.571\% \end{aligned}$$

Source URL: <http://numericalmethods.eng.usf.edu/>  
Saylor URL: <http://www.saylor.org/courses/me205/>

Attributed to: University of South Florida: Holistic Numerical Methods Institute



Saylor.org

For the same problem, the results from Euler's method and the three Runge-Kutta methods are given in Table 3.

**Table 3** Comparison of Euler's and Runge-Kutta 2nd order methods

	y(0.6)					
	Exact	Euler	Direct 2nd	Heun	Midpoint	Ralston
Value	0.96239	0.4955	1.0930	1.1012	1.0974	1.0994
$ \epsilon_i $ %		48.514	13.571	14.423	14.029	14.236

## Appendix A

### How do we get the 2nd order Runge-Kutta method equations?

We wrote the 2nd order Runge-Kutta equations without proof to solve

$$\frac{dy}{dx} = f(x, y), \quad y(0) = y_0$$

(A.1)

as

$$y_{i+1} = y_i + (a_1 k_1 + a_2 k_2)h$$

(A.2)

where

$$k_1 = f(x_i, y_i)$$

(A.3a)

$$k_2 = f(x_i + p_1 h, y_i + q_{11} k_1 h)$$

(A.3b)

and

Source URL: <http://numericalmethods.eng.usf.edu/>

Saylor URL: <http://www.saylor.org/courses/me205/>

Attributed to: University of South Florida: Holistic Numerical Methods Institute

Saylor.org



$$a_1 + a_2 = 1$$

$$a_2 p_2 = \frac{1}{2}$$

$$a_2 q_{11} = \frac{1}{2}$$

(A.4)

The advantage of using 2nd order Runge-Kutta method equations is based on not having to find the derivative of  $f(x, y)$  symbolically in the ordinary differential equation

So how do we get the above three Equations (A.4)? This is the question that is answered in this Appendix.

Writing out the first three terms of Taylor series are

$$y_{i+1} = y_i + \left. \frac{dy}{dx} \right|_{x_i, y_i} h + \frac{1}{2!} \left. \frac{d^2 y}{dx^2} \right|_{x_i, y_i} h^2 + O(h^3)$$

(A.5)

where

$$h = x_{i+1} - x_i$$

Since

$$\frac{dy}{dx} = f(x, y)$$

we can rewrite the Taylor series as

$$y_{i+1} = y_i + f(x_i, y_i)h + \frac{1}{2!} f'(x_i, y_i)h^2 + O(h^3) \quad (\text{A.6})$$

Now



$$f'(x, y) = \frac{\partial f(x, y)}{\partial x} + \frac{\partial f(x, y)}{\partial y} \frac{dy}{dx}.$$

(A.7)

Hence

$$\begin{aligned} y_{i+1} &= y_i + f(x_i, y_i)h + \frac{1}{2!} \left( \frac{\partial f}{\partial x} \Big|_{x_i, y_i} + \frac{\partial f}{\partial y} \Big|_{x_i, y_i} \times \frac{dy}{dx} \Big|_{x_i, y_i} \right) h^2 + O(h^3) \\ &= y_i + f(x_i, y_i)h + \frac{1}{2} \frac{\partial f}{\partial x} \Big|_{x_i, y_i} h^2 + \frac{1}{2} \frac{\partial f}{\partial y} \Big|_{x_i, y_i} f(x_i, y_i)h^2 + O(h^3) \end{aligned} \quad (\text{A.8})$$

Now the term used in the Runge-Kutta 2nd order method for  $k_2$  can be written as a Taylor series of two variables with the first three terms as

$$\begin{aligned} k_2 &= f(x_i + p_1 h, y_i + q_{11} k_1 h) \\ &= f(x_i, y_i) + p_1 h \frac{\partial f}{\partial x} \Big|_{x_i, y_i} + q_{11} k_1 h \frac{\partial f}{\partial y} \Big|_{x_i, y_i} + O(h^2) \end{aligned} \quad (\text{A.9})$$

Hence

$$\begin{aligned} y_{i+1} &= y_i + (a_1 k_1 + a_2 k_2)h \\ &= y_i + \left( a_1 f(x_i, y_i) + a_2 \left\{ f(x_i, y_i) + p_1 h \frac{\partial f}{\partial x} \Big|_{x_i, y_i} + q_{11} k_1 h \frac{\partial f}{\partial y} \Big|_{x_i, y_i} + O(h^2) \right\} \right) h \\ &= y_i + (a_1 + a_2) h f(x_i, y_i) + a_2 p_1 h^2 \frac{\partial f}{\partial x} \Big|_{x_i, y_i} + a_2 q_{11} f(x_i, y_i) h^2 \frac{\partial f}{\partial y} \Big|_{x_i, y_i} + O(h^3) \end{aligned} \quad (\text{A.10})$$

Equating the terms in Equation (A.8) and Equation (A.10), we get

$$a_1 + a_2 = 1$$

$$a_2 p_1 = \frac{1}{2}$$



$$a_2 q_{11} = \frac{1}{2}$$

Source URL: <http://numericalmethods.eng.usf.edu/>  
Saylor URL: <http://www.saylor.org/courses/me205/>

Attributed to: University of South Florida: Holistic Numerical Methods Institute



Saylor.org